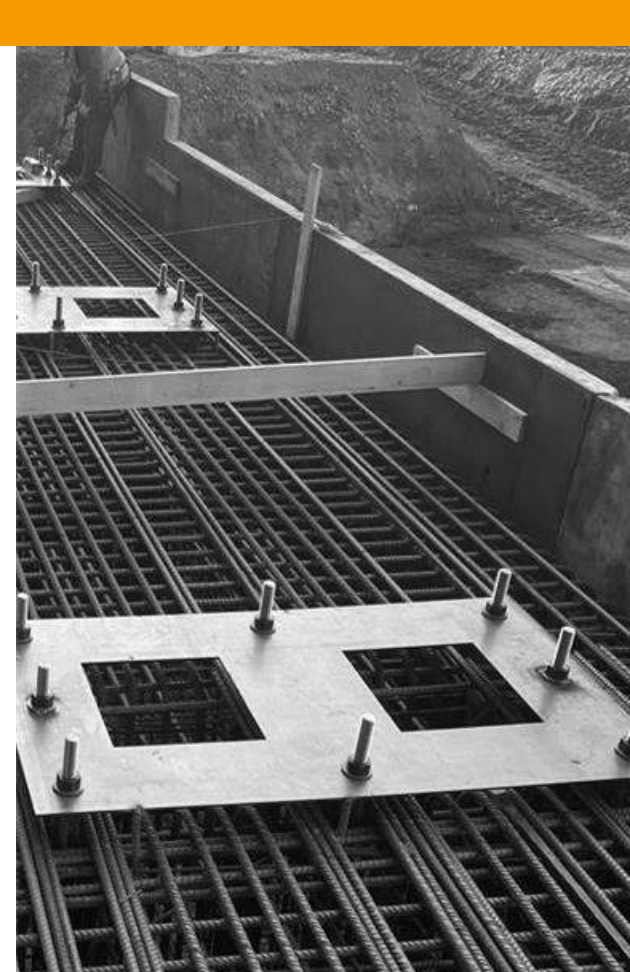




## GLOBAL EXPERIENCE ITALIAN KNOW-HOW

- Heavy equipment
- Hydro mechanical equipment
- Renewables
- Civil construction & Industrial Services



# CIVIL CONSTRUCTION & INDUSTRIAL SERVICES DIVISION





# Index of Content

**01** ATB Group presentation

---

**02** Civil Construction & Industrial Services Division

---

**03** References & Expertise

---



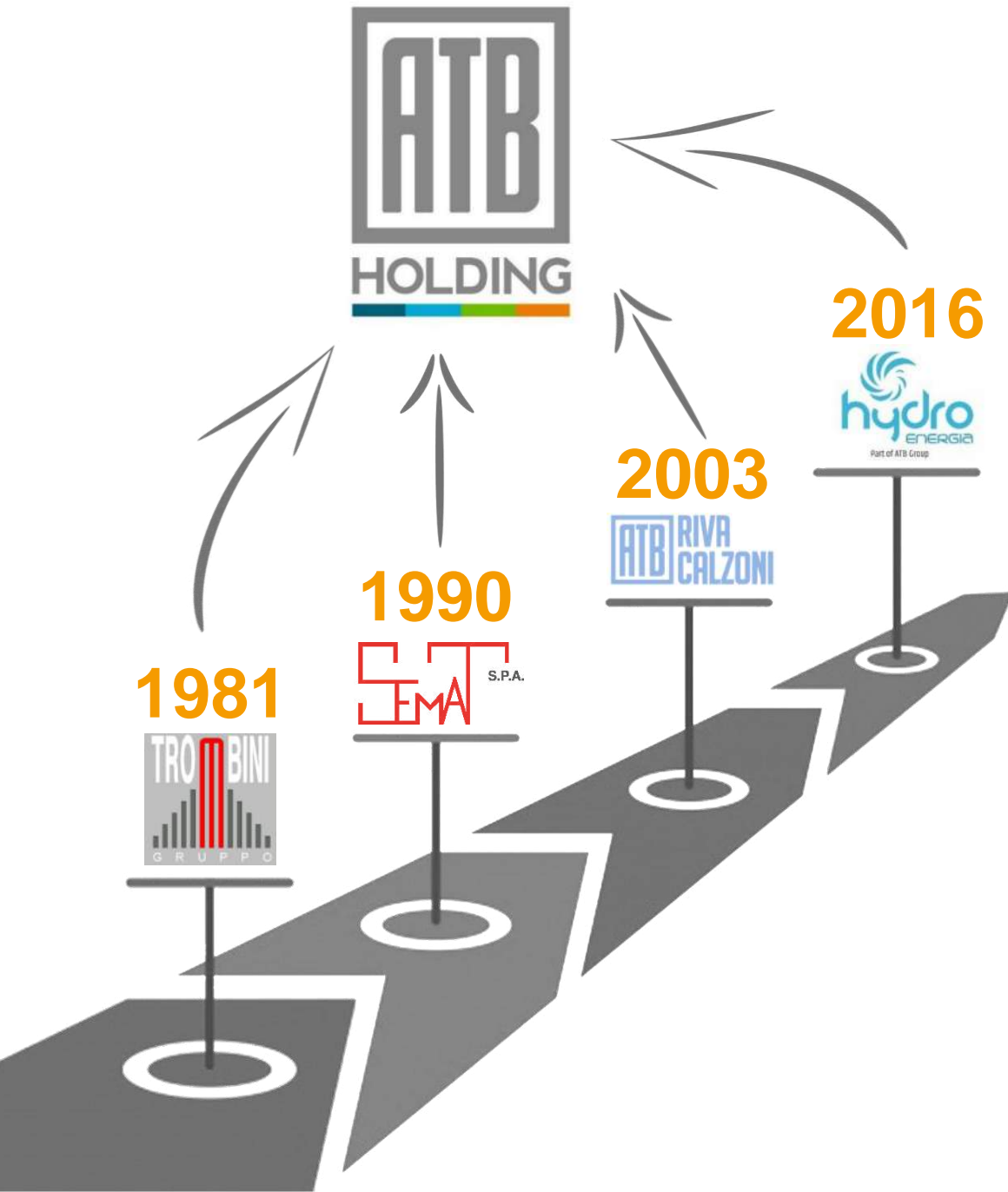


01

**ATB Group  
Presentation**



# Milestones



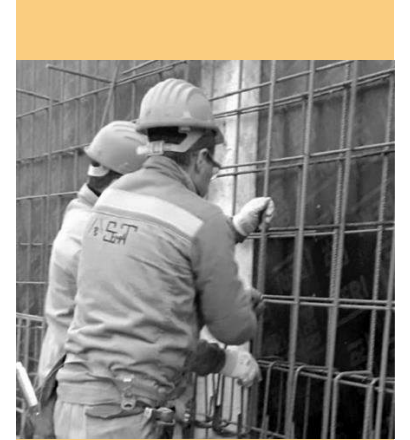
## TODAY

an industrial group with a  
global presence:

**1.700** people

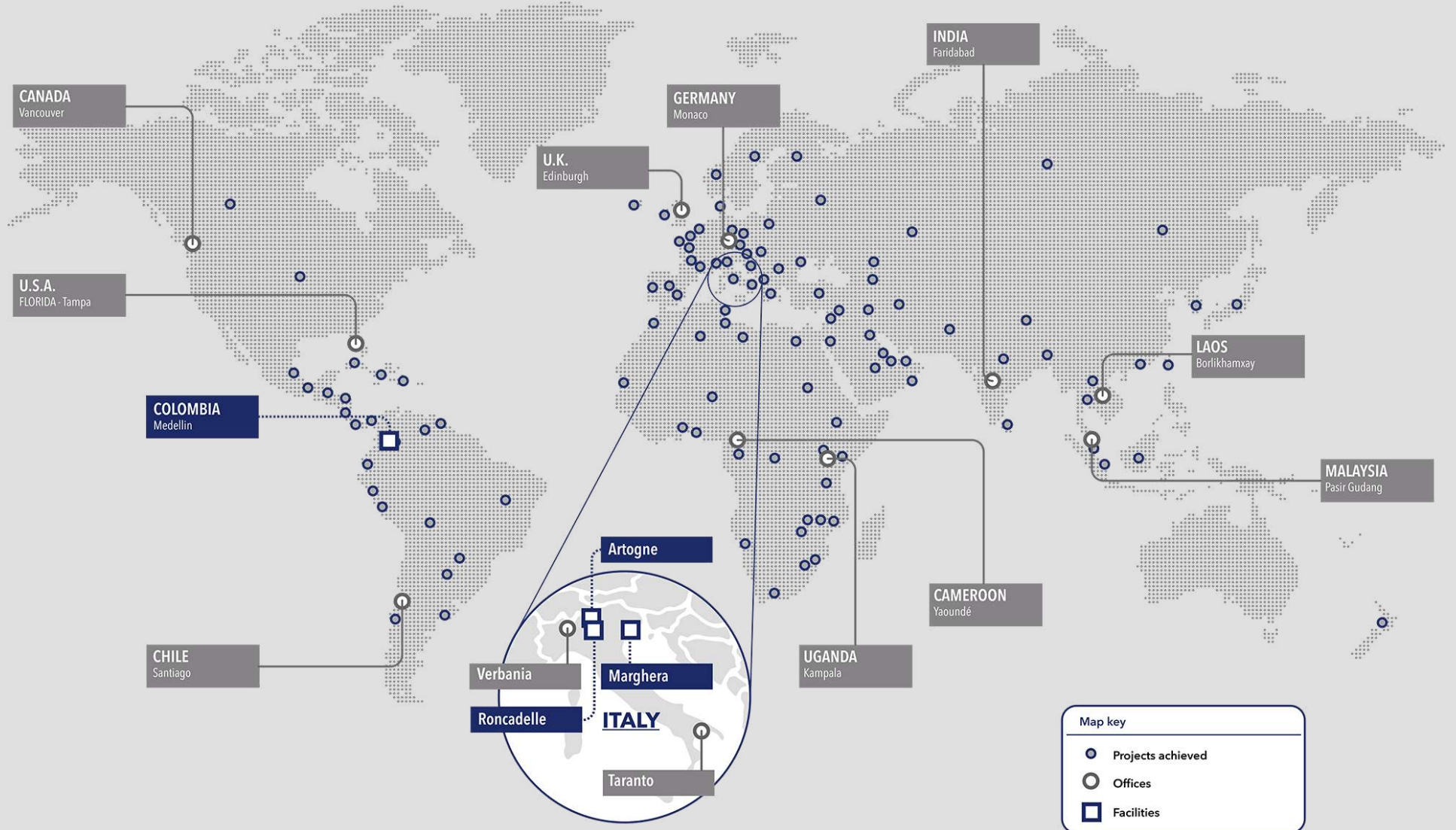
**€ 225** milion revenues

**€ 250** milion backlog



# Worldwide Presence

workshop



# Experience and expertise in several business sectors

**105 years in  
Hydropower** as Leading  
Hydro Mechanical  
Equipment Main  
contractor



**55 years in Oil & Gas** as  
leading Process  
Equipment  
manufacturer



**40 years in  
Construction** of  
industrial complexes,  
infrastructure works  
and management of  
full-cycle iron and  
steelmaking plants



**35 years in Small Hydro**  
as leading Italian  
electromechanical  
equipment supplier



# Values & Strengths



Brand, Heritage, Human Resources



Rigorous, flexible and international organization



Reliability, Cost Efficiency, Technological Leadership and Innovation



Quality, Health and Safe Approach as a must to minimize risk and continuously improve behaviors, processes and products





02

**Civil Construction &  
Industrial Services Division**

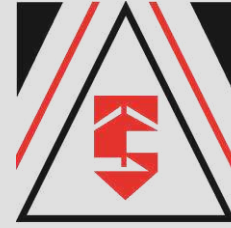




# The Company

More than forty years of experience and specialization in industrial construction, in services for steel companies and in the design and construction of infrastructure works.

Always active in the construction sector, **SEMAT** specializes in the construction of industrial complexes, mechanical and refractory maintenance for both integral cycle and electrical steel plants. It is currently present in six European countries where it is pursuing and developing some important industrial contracts through the provision of a complete range of advanced facilities.





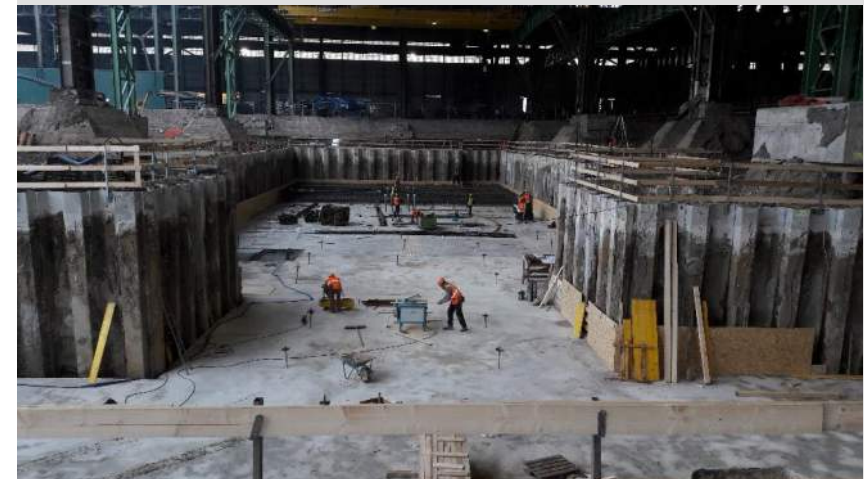
Strength of the company is the ability to formulate and customize the most suitable solution to the technical, economic and strategic needs of the customer.

Thanks to the experience gained in industrial and steel environments, **SEMATA** has created a strategic sector to satisfy the daily needs of various customers by providing a range of services that ensure the correct functioning of the plants and greater durability of the same.

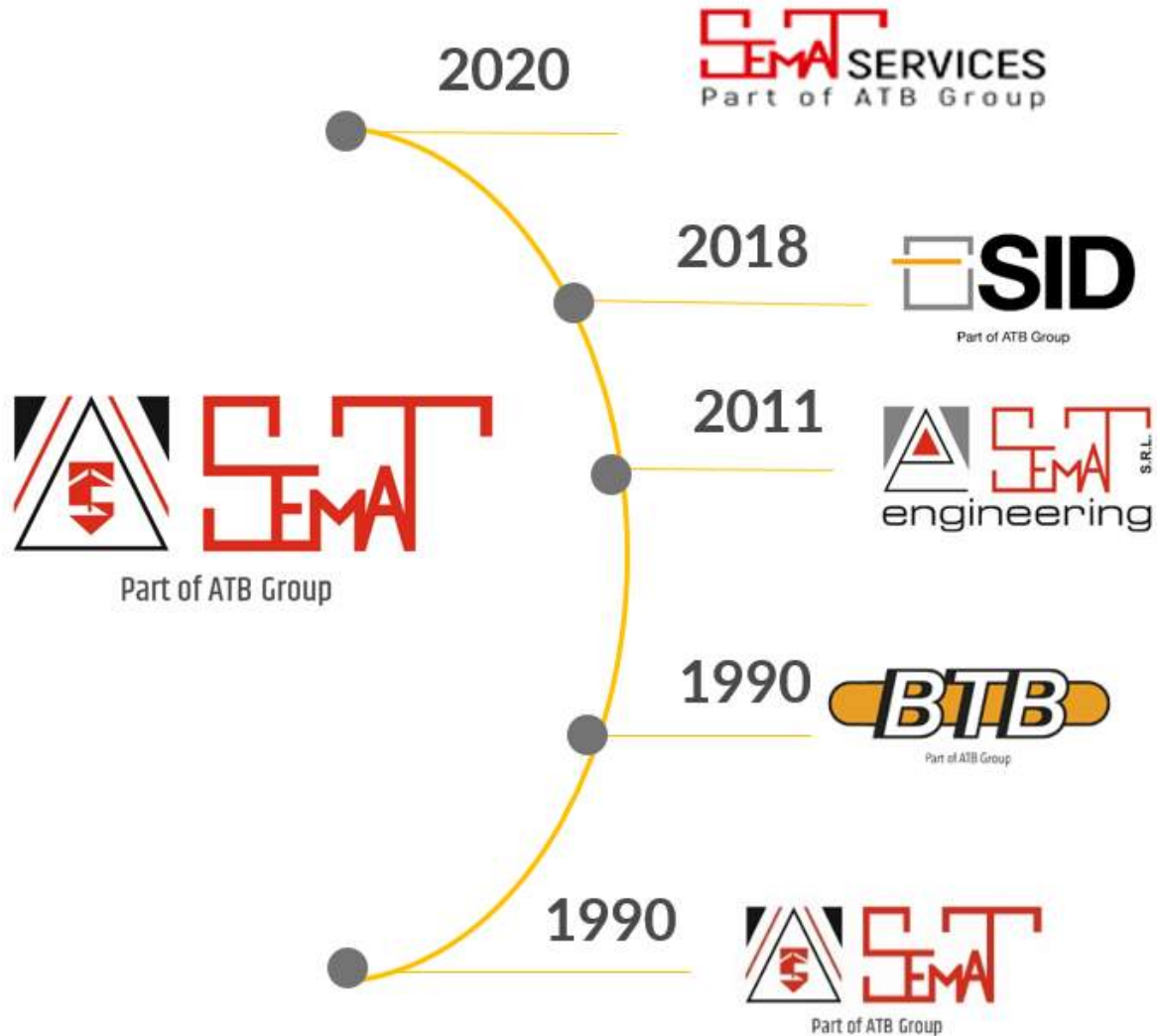
The business efficiency of **SEMAT** allows it to be competitive even in medium-sized activities, often offering specifically designed technologies and systems.

Today **SEMAT** and its affiliates have an average staff of approximately **700 employees**, own a **wide fleet of machines** for both earthmoving and special works and produce a **turnover of approximately €105.000.000** (data referring to the 2022 financial year).

It operates mainly with its own staff who have been maintained over the years and are highly specialized and trained. It has a technical and engineering staff for the design, planning and execution of the works, it guarantees a constant relationship with the customer in order to coordinate and manage the most crucial phases of the projects. thus ensuring the achievement of the set objective.



# Semat at a glance



Revenues 2022  
€ 105.500.000



Employees  
700

## Main Certifications:

ISO 9001  
ISO 14001  
OHSAS 18001  
D.Lgs. 231 Ethical Code



Sistema Certificato  
UNI EN ISO 9001  
SC 06-841/EA 28



Sistema Certificato  
UNI EN ISO 14001  
SCA 16-254/IAF 28



Sistema Certificato  
BS OHSAS 18001  
SCS 16-211/IAF 28

# Semat Dedicated Companies



Complex construction works for rolling mills, steelworks, coke production plants, and everything necessary for the steel industry in general;



Refractory and mechanical maintenance activities serving the steel industry;



Carries out the same activities as **SEMAT** for the German market;



Demolition and reclamation works;



Industrial cleaning works serving the steel industry.



# Semat Profile



- ✓ **Safety** is an adamant principle, indexes can always be better;
- ✓ **Strong Compliance** within the organization, balanced employees' engagements;
- ✓ **Partnership** oriented, our goal is the satisfaction of our Client for a long term and profitable collaboration.



- ✓ **Industrial plants & Infrastructures** construction: on a turn key basis or civil works only;
- ✓ **Industrial buildings** construction and refurbishment;
- ✓ **Short-stop revamping** activities;
- ✓ **Industrial Services** and asset management;
- ✓ **Transportation** and logistic.



- ✓ Vast fleet of equipment and vehicles, €30MLN of CapEx;
- ✓ R&D oriented, ready to invest in new processes and technologies

# Semat in Europe



Permanent presence in:



Main Partners:





03

**References &  
Expertise**



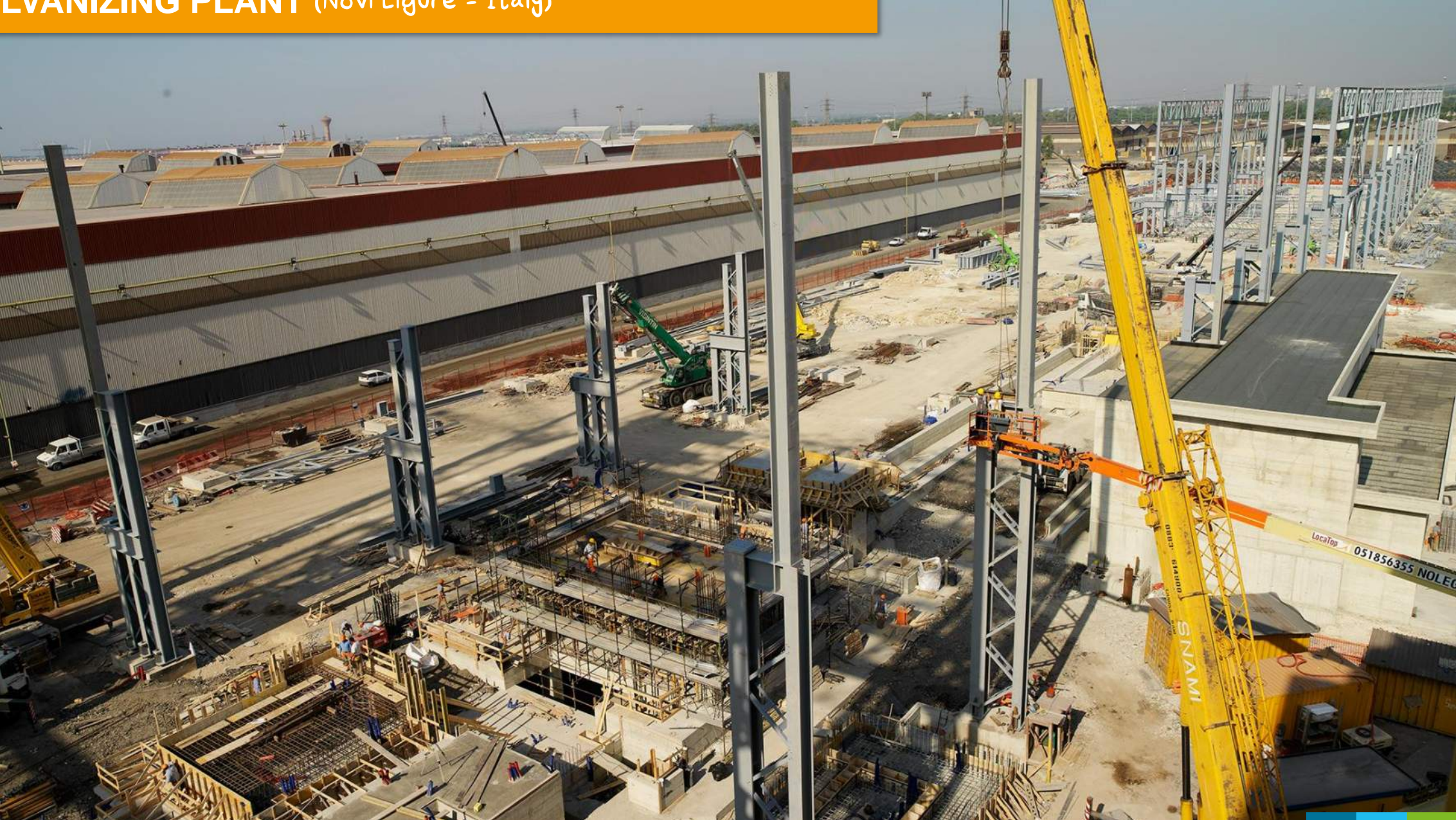




# CIVIL CONSTRUCTION



# GALVANIZING PLANT (Novi Ligure - Italy)



GALVANIZING PLANT

# OXYGEN PLANT (Taranto - Italy)



O  
X  
Y  
G  
E  
N  
  
P  
L  
A  
N  
T



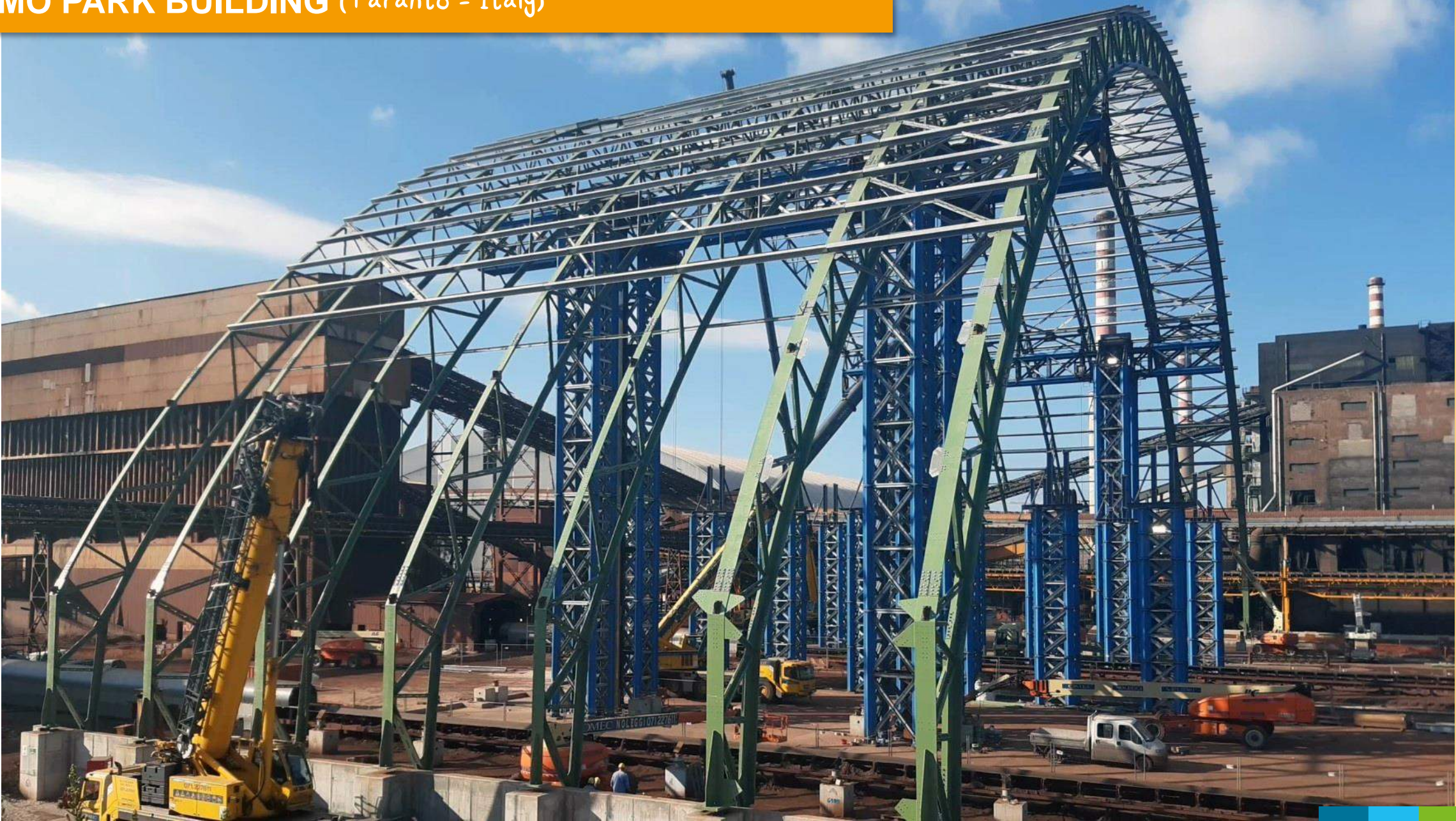
LIMESTONE STOCKYARD STORAGE STRUCTURE (Taranto - Italy)



L  
I  
M  
S  
T  
O  
R  
A  
G  
E  
S  
T  
R  
U  
C  
T  
U  
R  
E  
S  
T  
O  
C  
K  
Y  
A  
R  
D



# OMO PARK BUILDING (Taranto - Italy)



OMO  
PARK  
BUILDING



# MINERAL PARK BUILDING (Taranto - Italy)



M  
I  
N  
E  
R  
A  
L  
  
P  
A  
R  
K  
  
B  
U  
I  
L  
D  
I  
N  
G



# PIEZOMETRIC TOWER TNA/2 (Taranto - Italy)



P  
I  
E  
Z  
O  
M  
E  
T  
R  
I  
C  
  
T  
O  
W  
E  
R

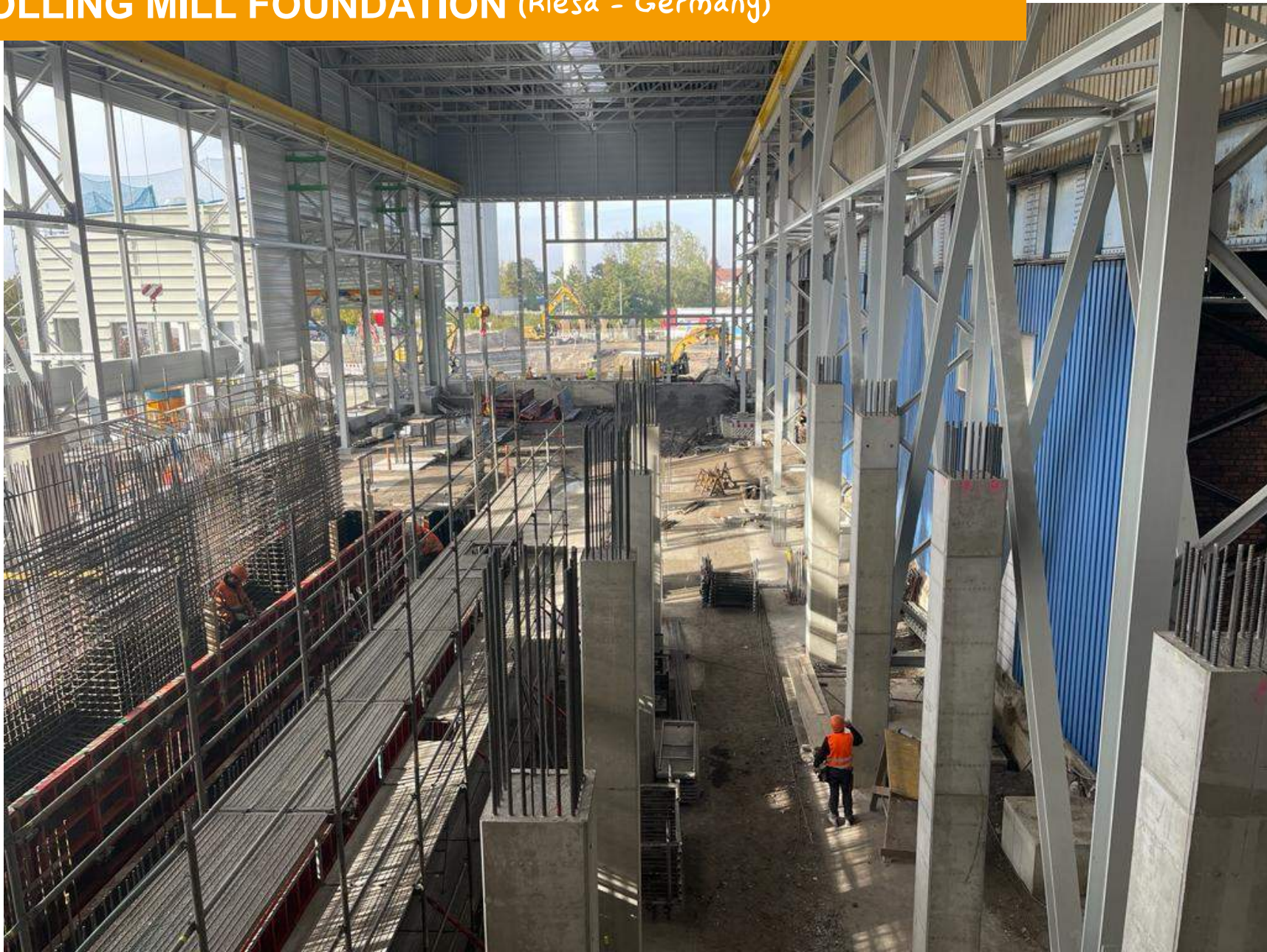
# ROLLING MILL FOUNDATION (San Zeno Naviglio - Italy)



ROLLING  
MILL  
FOUNDATION



# ROLLING MILL FOUNDATION (Riesa - Germany)



ROLLING MILL FOUNDATION

# SPOOLER PLANT (Riesa - Germany)



S  
P  
O  
O  
L  
E  
R  
  
P  
L  
A  
N  
T



# SCRAP BUILDING



S  
C  
R  
A  
P  
  
B  
U  
I  
L  
D  
I  
N  
G



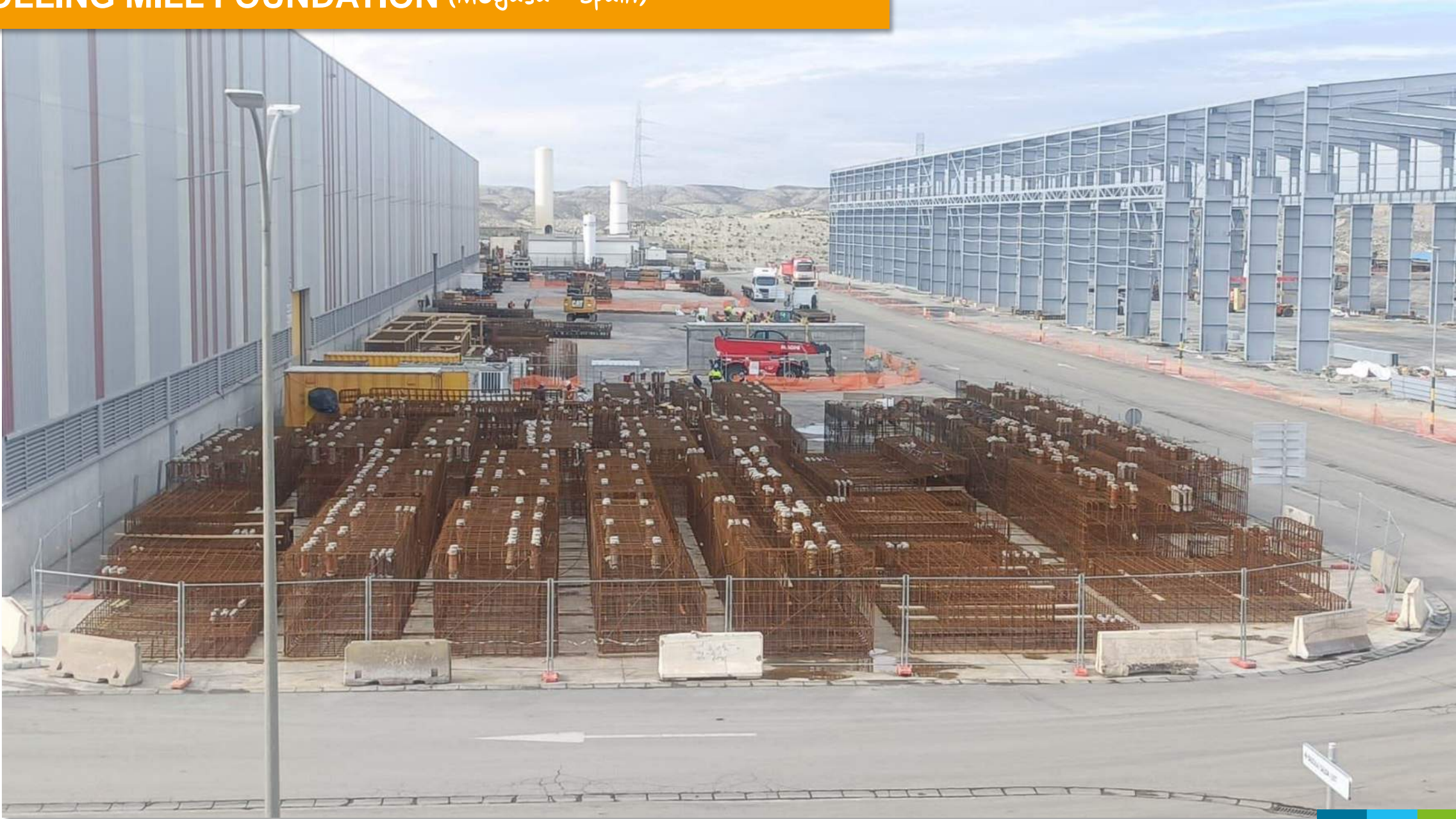
# QUENCHING TOWERS



Q  
U  
E  
N  
C  
H  
I  
N  
G  
  
T  
O  
W  
E  
R  
S



# ROLLING MILL FOUNDATION (Megasa - Spain)



ROLLING MILL FOUNDATION



# WATER TREATMENT PLANT (Mantova - Italy)



W  
A  
T  
E  
R  
  
T  
R  
E  
A  
T  
M  
E  
N  
T  
  
P  
L  
A  
N  
T

# ROLLING MILL FOUNDATION (Siviglia - Spain)



ROLLING MILL FOUNDATION



# NEW SCRAP BUILDING (Potenza - Italy)



S  
C  
R  
A  
P  
  
B  
U  
I  
L  
D  
I  
N  
G





# INFRASTRUCTURES



# BRE.BE.MI. HIGHWAY (Italy)



H  
I  
G  
H  
W  
A  
Y

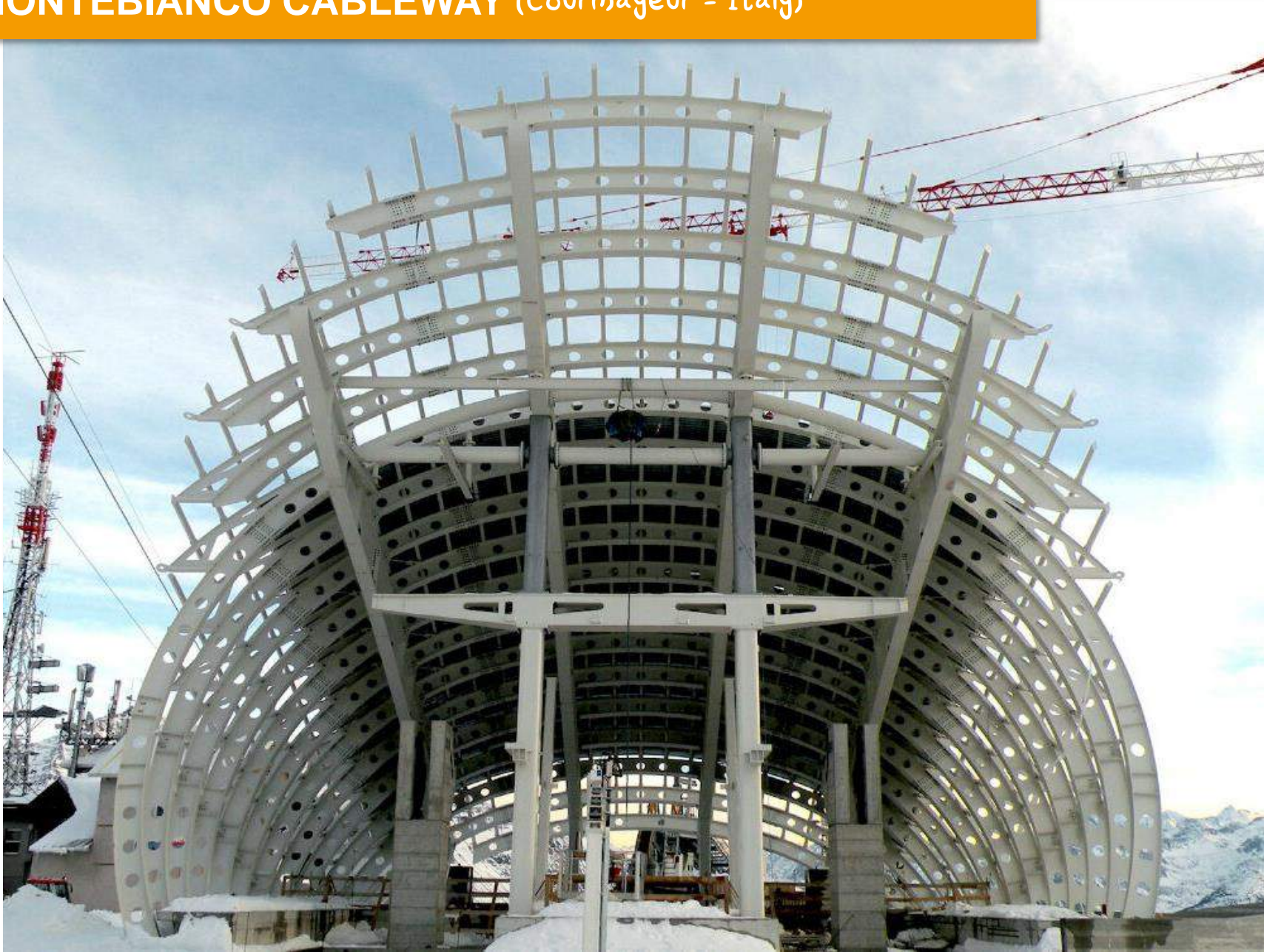
# TARANTO-AVETRANA FREEWAY (Italy)



F  
R  
E  
E  
W  
A  
Y



# MONTEBIANCO CABLEWAY (Courmayeur - Italy)



C  
A  
B  
L  
E  
W  
A  
Y

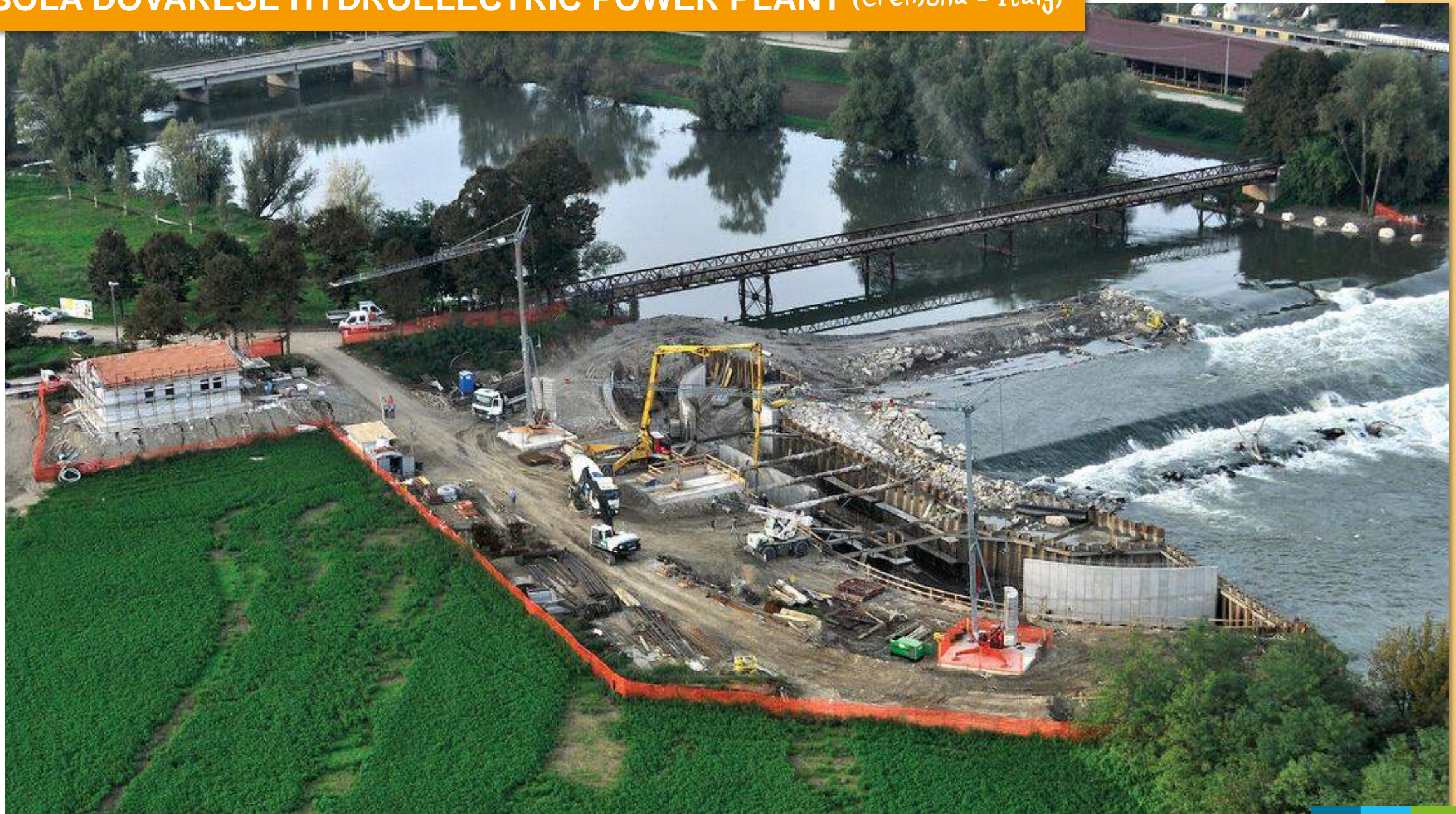


# CAMPOLESSI HYDROELECTRIC POWER PLANT (Gemona - Italy)



HYDROELECTRIC  
PLANT  
POWER

# ISOLA DOVARESE HYDROELECTRIC POWER PLANT (Cremona - Italy)



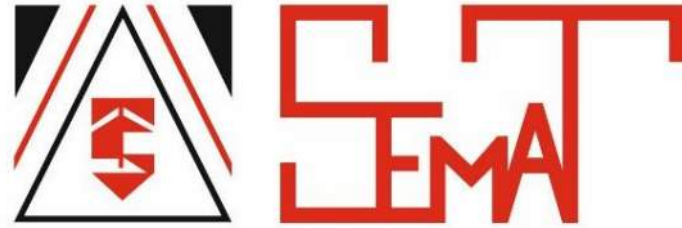
HYDROELECTRIC  
POWER PLANT



*“It is not the strongest of  
species that survives, nor  
the most intelligent, but  
the most responsive to  
change”*

*Charles Darwin*

*Thank You!*



Part of ATB Group



25040 Artogne (BS) - Italy  
Via Fornaci 45/47



+39 0364 598881



[info@sematcostruzioni.com](mailto:info@sematcostruzioni.com)



[www.atb-group.it](http://www.atb-group.it)